

# ROGERS PARK HISTORICAL SOCIETY

*"Preserving the Roots of Rogers Park/West Ridge"*

## NEWSLETTER

Vol. VI No. I

Winter 1991

### From the President

This is my first time as president of a club or association to which I belong. However, I have served on the board of directors in the past and as vice-president of our Society. It is an honor to be your new president. It will certainly take a lot of hard work to fill the shoes of our long-time president Mary Jo Doyle. I will try to live up to all of the good things the Society has accomplished over the past 15+ years.

Our goals for the next two years are to obtain more new members and attempt to renew some of our former members. Mainly though, it is to locate and move into a permanent building to house our new History Center. Our photos, artifacts and oral histories will be there for present generations and those yet unborn.

I wish all of you a Happy 1991 and hope that there will be peace in the world soon.

Martin J. Schmidt, FPSA



### Upcoming May Program

The Rogers Park Historical Society encourages all members, friends and residents to attend the first Rogers Park/West Ridge Photo Day on Saturday, May 4, from 11:00 am to 3:00 pm. This program will include an exhibit of the Society's vast photo collection dating back to the 1870s, many from the turn of the century, others from not so long ago and many from the present. We invite everyone to bring their old photos (family or otherwise) pertaining to this area. This will allow people to bring their photos and meet the person, Society President Marty Schmidt, who will copy their photos for our archives and return them. Special rates for copies of any of the Society's photo collection will be in effect for this day only.

This wonderful program will take place at the home of Joe and Karen Vanourek, 2458 W. Morse and will be a chance to view a unique West Ridge home on a mini-house tour. Early reservations should be made due to limited space. Admission is \$4.00 for members and \$5.00 for nonmembers. (Why not pay your dues now? See page 11.) Proceeds will benefit the Society's building fund. Refreshments will be served, including the famous rum cake.

### HISTORICAL SOCIETY ELECTIONS

The Rogers Park Historical Society held their election of new Officers and Board of Directors on Saturday, January 19th at the regular business meeting at the Rogers Park Branch Library.

The officers for the next two years are:

President	Martin J. Schmidt
Vice President	Loren P. Kringle
Recording Secretary	Bettie Jasper
Corresponding Secretary	Loretta Bamman
Treasurer	David E. Miller

The two-year board members are:

John E. Arcand	Laurence A. Calhoun
Mary Jo Doyle	Jeanette Statland

The one-year board members are:

Herb Fagen	Mitzi Golden
Ruth Shatzel	John J. Zender

Congratulations to the new officers and board members and we thank all those who have served the Society during the past two years.

### OFFICER PROFILES

Martin J. Schmidt - Professional commercial photographer for over 50 years  
Army Signal Corps photographer  
Fellow of the Photographic Society of America (FPSA)  
Mid-States Industrial Photographers Association  
LEICA Hist. Society of America  
Chicago Photographic Collectors Society Director  
North Eastern Illinois (N.E.I.L) Historical Council Board  
Rogers Park Community Council  
Levy Center - Evanston -  
Photography Teacher

*continued on page 2*

## LETTERS .... COMMENTS

### Our Christmas Note - 1990

As you probably know I (Eleanor) am doing the writing and Ken is addressing the envelopes. This is why we are late this year.

We believe that most of you, received a short note from us last year, telling about the small stroke I had in November. of 1988, which affected my left side, so I am not able to use my arm or fingers nor my leg or foot.

I thought it would be very easy to type, using my right hand, but not so. I am lost this busy Christmas season not being able to write to my friends as I usually do. I am dictating this to Ken and he is doing the typing. We know you will understand. I spend most of my time in bed or in my wheelchair. We are trying to participate in a few Christmas activities.

The last two years have not been our best, but with prayers and patience we look forward to the future. We stayed close to home all last year. As of now I do not have permission from the therapist to ride in the car. I hope to get that soon because there is so much I want to do, which requires riding here and there.

Kind regards and best wishes for a Merry Christmas and a Happy, Healthful New Year.

Eleanor and Ken Davis

To everyone involved:

My deepest appreciation for the care package the members of the Historical Society sent for me. It was a small token of everyone's affection, but it meant a great deal to me. To be thousands of miles away and to know that people care can really brighten someone's week. The members involved certainly succeeded in brightening up my week and made my X-mas that much better. For that I am eternally grateful.

Sincerely yours,  
Ian G. Hyde

Thank You!

Editor's Note:

Address comments to:  
Norm Coughlin, Editor  
RPHS NEWSLETTER  
6555 N. Bosworth Ave.  
Chicago, Illinois 60626

## VOLUNTEERS NEEDED

Would you like to help the Society? Even an hour or two a month would help. Please contact Mary Jo at 764-2401.

## OFFICER PROFILES — *continued from page 1*

- Loren P. Kringle - Chicago Northwestern Railroad  
'Chris' Midwest Research Hist. Society  
Metal Detector & Archaeological  
Clubs, Inc.  
Neighborhood Watch Program  
Veterans of Foreign Wars  
(VFW) — RP Post  
Interests are gardening, cooking,  
collectibles and history
- Bettie Jasper - Legal Secretary - now part-time  
Mother of four sons  
Supporter of Chicago Symphony  
Orchestra, Light Opera Works and  
Lincolnshire Mariott  
Interests are gardening and  
sewing
- Loretta Bamman - Patent Law Secretary - retired  
Johanna Bureau for the Blind - former  
volunteer  
Former teacher of English to  
foreign-born at home through the  
Howard Area Community Center  
Levy Center - Evanston - Six  
Satellite Clubs - volunteer book-  
keeper  
Golden Years Club - Music  
Director and recent board member  
Choraleers - featured singer  
Friends of the Rogers Park  
Library - Active Member  
St. Jerome's - school board  
member and monthly commentator  
Interests are poetry, singing,  
short story writing and water color  
painting
- David E. Miller - Railroad Retirement Board -  
Legislative Analyst  
Rogers Park Presbyterian Church  
- Session  
Rogers Park Community Council  
Secretary  
Alliance of Art Institute  
of Chicago  
Interest in reading, music and the  
preservation and revitalization of  
Rogers Park

## CALENDAR OF EVENTS

- Sat. **March 2** RP Historical Society Program  
11:45 am-12:30 pm West Ridge/Rogers Park &  
Beyond  
Growing Up in the 40s, 50s & 60s  
(see article below)
- Sat. **March 9** Rogers Park Branch Library  
10:00 am- 4:00 pm Book Sale
- Sat. **April 6** RP Historical Society Program  
11:45 am-12:30 pm Rogers Park Fire of 1894
- Sat. **May 4** RP Historical Society Program  
11:00 am- 3:00 pm Photo Day and Mini House  
Tour  
(see page 1 and page 11)

## MARCH PROGRAM

West Ridge/Rogers Park and Beyond:  
Growing up during the 40s, 50s & 60s

Herb Fagen, local author of "The Fifties and Sixties: A Personal Odyssey", will share anecdotes, photographs and commentary associated with his many years of residency in the West Ridge/Rogers Park area. A discussion will follow. Program will be presented on Saturday, March 2nd from 11:45 am to 12:30 pm at the regular meeting of the Historical Society at the Rogers Park Library.

## STILL IN TOUCH

Are you still in touch with an old neighbor or relative whose roots are in Rogers Park? How about sending in a gift membership to the Society in their name to keep them posted on current happenings or jogging their memories on old events via the Newsletter? It will be mailed to anyone anywhere in the world.

## ORAL HISTORY PROJECT

Our Society is doing more oral histories in coming months. Oral history coordinator, Chris Kringle, has consented to take on this task. Assistance and information will be given to anyone who wishes to conduct an interview with a neighbor, relative or friend. Please help us in this important endeavor. For information, call 262-0218 or 764-2401.

## Recent Donations:

- John Arcand - RPHS member  
Angel Guardian Orphanage booklet titled "The City Within a City" - early 1960s and a post card showing an aerial view of the orphanage grounds
- Robert Clarke - RPHS member  
Book titled "Pioneer Railroad", The Story of the Chicago and Northwestern System. It was published in honor of A Century of Service - dated 1948
- Tom McNulty - RPHS member  
Envelope and dues statement from the Luxembourg Brotherhood - dated 1934 (found in an alley)
- Gwen Nordgren -RPHS member  
Booklet A. H. Woods' Adelphi Theatre - dated 1924

## SPECIAL ANNOUNCEMENTS

### Good-bye and Good Luck

Father James Chambers, a five-year member and ace volunteer of our Society, is moving to Lexington, Kentucky to work in a hospital. After a recent meeting, many of our active members joined him for a farewell party. Eleanor Mars' rum cake was delicious. Later he was presented with a color photographic book on Nepal, where he worked for 25 years. All of us wish father the best of luck .... we will surely miss him.

### Congratulations

To Chris Kringle, who was written up in the 'Community In Focus' column of the Chicago Suburban Times of January 9th. The article "Can You Dig It" relates to his quest for buried treasure on the property of the Norwood Park Historical Society and his years of metal detecting.

### Operation Desert Shield Update

The Rogers Park Historical Society received a letter from Ian Hyde expressing his sincere appreciation for the holiday package that RPHS sent to him over in Saudi Arabia.

### Nortown Theatre Update

Additional community meetings will be conducted regarding the Nortown Theatre. Anyone interested in preserving this structure can contact Susan Lukatch (764-9183) to discuss this topic.

## THE WAY IT WAS

### Athletes and Athletics in Rogers Park

When we lost member Phil Steffen awhile back, we lost more than a friend. We lost lots of sport memories from early Rogers Park. He was just enough older than me to fill in an era before I became aware there was a great world out there to revel in. He could recall the glory days of the Angel Guardian baseball teams, and much more.

So, I will do my best to take in sports as I remember them, sport by sport. My first memories are those of the 1922 Loyola Academy baseball team, as seen through the eyes of a fifth grader, as we gathered each afternoon after school to stare wide-eyed at every move they made in practice or in a game.

This team produced two men who would go on to the major leagues as members of the New York Giants: Fred Lindstrom and Paul Hartley. In addition to these standouts, other Rogers Parkers included Bill Coyne, Len McGraw, Art McDonough, Larry O'Connell, Fred Ludwig, Dick Finn and some now lost to the dim memory of time.

Staying with baseball at the high school level, Senn High School, whose boundaries then encompassed Rogers Park, had some good teams, mainly the ones for which Ted Thelander pitched. He lived on Arthur near the railroad, and pitched them to the Public League title at least once.

Loyola University fielded some great baseball teams, as some of the Academy players moved up, with some football team members implementing its ranks, and was considered as a perennial worthy contender in the independent college ranks.

Baseball, at the sandlot level, was a great outlet for most men, especially after Prohibition closed the saloons in 1921. Prominent in the area were the Chicago Blues, who built a

park at Lunt and California Avenues.

East Rogers Parks home field in 1906 — present site of the Rogers Park Post Office on Devon Avenue.

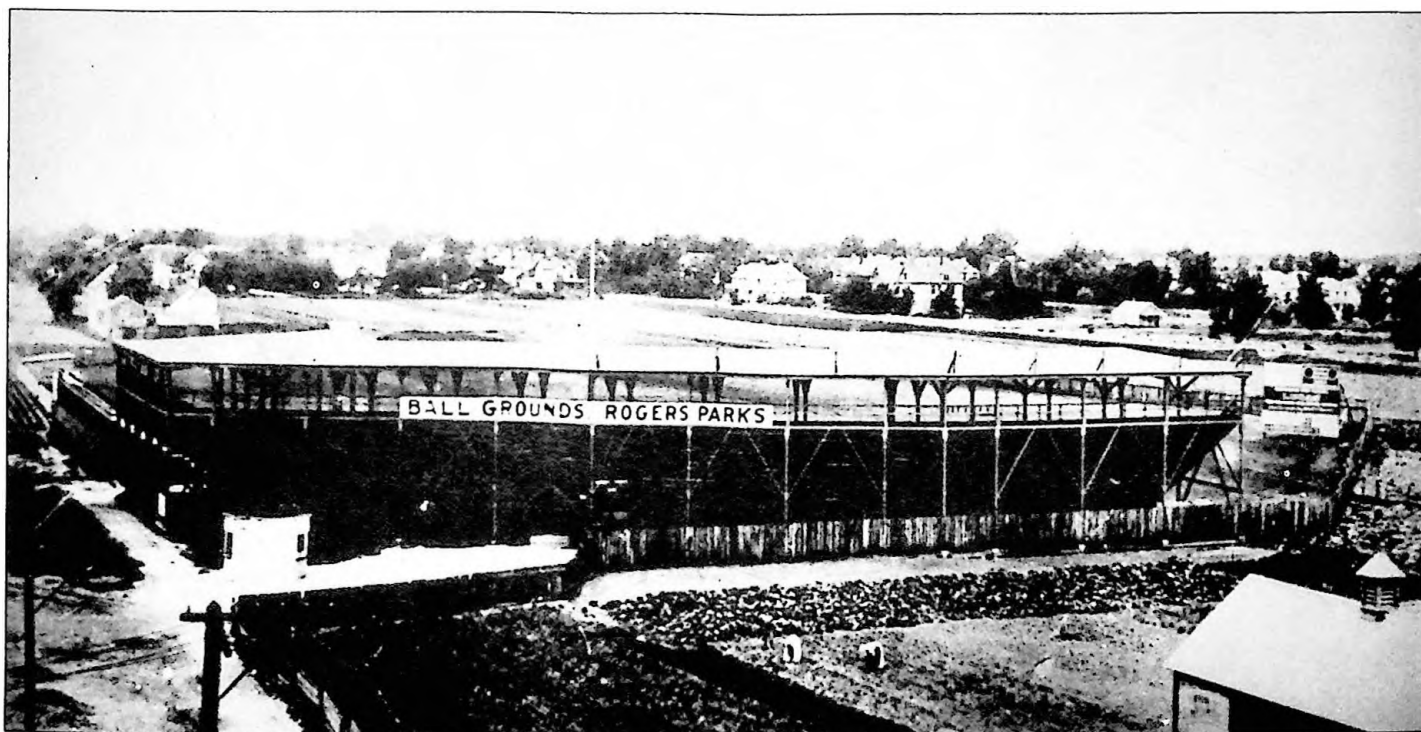
My friends and I then had our Sunday afternoons all planned. We walked to Western and took the free 'bus' up Lunt Avenue to the park and 'ditch in' to the game. Said bus was Bob Krier's father's express truck with a little bunting and planks placed length-wise as seats. It would meet each Western Avenue streetcar up until game time. They would often have some large crowds. Dave Black was their star pitcher.

Another earlier prominent team was the East Rogers Parks who reportedly played their home games on the site of the Rogers Park Post Office. A later arrival on the scene was the 'Sincerity Club' which played at the Loyola University field on Sunday afternoons. One of their more ebullient players was Eddie Zender, who always wore white stockings at variance with the navy blue worn by his teammates. 'Sally' Giatto was their pitching ace. Midway through each game they would 'pass the hat' and dump the contents into a badly beat up old Gladstone bag. Sad to say, the team's breakup was triggered when the scholarly looking treasurer, who always took up the collections, 'went South' with the cache (and the cash) one week.

And now basketball is on the agenda. Back to Loyola University for some highlights. They always seemed to have better than average teams and a rough schedule.

With different eras relating to dominant players, let's look into it: Starting in the late 20s with the Tony Lawless era, the Charley Murphy, Dick Butzen, Jim Bremner era, the O'Brien era, the Kautz and Novak era, the Hogan era, and so on. Finally in 1963 they won the prestigious NCAA tournament, defeating Cincinnati in overtime. Since then they have been up and down.

*continued on page 9*



East Side of Rogers Park — 1906

## What We've Been Doing

N.E.I.L Meeting — Sat. Nov. 10 — The Edgewater and Rogers Park Historical Societies were the hosts of the November N.E.I.L meeting held at the North Lakeside Cultural Center (NLCC). Kathy Gemperle, president of Edgewater, welcomed the group and gave a brief history of how the two mansions at Berger Park, Sheridan Road and Granville, were saved for community use in the late 1970s. NLCC now occupies the north mansion. Leroy Blommaert related some interesting stories about the three mansions, including the original north one that was torn down, and their use by the Viatorian Fathers dating from the early 1940s. Mary Jo related information about the Granada Theatre and the exhibit at the mansion.

RPHS History Committee Meeting — Sat. Nov. 17 — Chris Kringle, History Chairperson, held a meeting at his home for members of the committee. After a pleasant homemade meal was served, 15 people discussed history topics in general, methods of oral history and then listened to an interesting tape of John Staerk, whose father was a blacksmith on Clark Street in the early 1900s.

Norwood Park Historical Society — Wed. Nov. 28 — Mary Jo and Marty attended the monthly meeting to hear Chris Kringle give a talk on metal detecting and show slides of the artifacts found on the grounds of the Society's house dating back to the 1840s. The display of memorabilia was also there for all to view.

HP/DC/Wisdom Bridge Building Tour — Thu. Nov. 29 — Mary Jo and Marty went to see the old Pulitzer/Lerner Building that was being shown at an open house for possible future tenants.

RP Historical Society Program — Sat. Dec. 1 — Paul Goguen presented an informative talk at the Rogers Park Library on Sheridan Road Beautification, which is one of four committees of the overall Sheridan Road Development Plan.

Indian Boundary Taping — Wed. Dec. 5 — Herb Fagen interviewed Mary Jo and Susan Lukatch as part of his research on Indian Boundary Park and Zoo. A copy of the tape is now in the Society archives.

Ravenswood/Lakeview Historical Assoc. — Wed. Dec. 5 - Mary Jo and Marty met with representatives from other local Chicago historical societies to share ideas and present ourselves to city departments, including the Mayor's Office of Special Events and the Office of Information and Inquiry. More information will be forthcoming.

Norwood Park Holiday House Tour — Sun. Dec. 9 - Mary Jo and Ruth Shatzel enjoyed an extremely interesting historical society tour of homes decorated for the holidays. One was the Old Peoples Danish Home where traditional fare was served.

Mary Thiry Birthday Celebration — Sat. Dec. 15 — Mary Jo, Marty and John Arcand helped Mary celebrate her 97th birthday with many family members and friends. Daughter Joan supplied the marvelous food and a delicious cake for the guests. Photos taken by Marty are now part of the Society archives.

HP/DC Holiday Party — Thu. Dec. 20 — Mary Jo and John Arcand attended a party held at the HP/DC office. Fun and conversation were accompanied by food and prizes donated by local Howard area businesses.

RPHS Annual Holiday Party — Sat. Jan. 5 — (see article on page 8)

RPCC Breakfast — Fri. Jan. 11 — Mary Jo and Marty attended the annual breakfast held at Loyola University. Congratulations to Jim Hobson, Citizen of the Year, and to the Tender Loving Care Award recipients, some of whom are RPHS members.

Nortown Theatre Community Meeting — Mon. Jan. 14 — Approximately 50 persons attended the first open community meeting at Warren Park regarding the future of the Nortown Theatre. Many suggestions were given for use of this historical structure. Plans are proceeding.



### Special Thanks to:

Armanetti's — Western Ave., Corky's Catering and Ed and Erv's Centrella for their contributions to our holiday party.

Augustana Center for the use of their parking lot during our holiday party.

Bill Carney for his computer expertise.

Dunkin Donuts — Clark Street, Elaine's Bakery and Superior Coffee for their donations for our November N.E.I.L meeting.

Raelyn Harris for design and set up of the newsletter on the computer.

Marvin Greene, CPA, for the audit of the Historical Society's 1990 records.

Rogers Park Warehouse for moving a donated Granada Terra Cotta piece to a temporary storage area.



### Early History of Rogers Park

A write-up on the Early History of Rogers Park is available for \$1.00 per copy. You can pick one up at a RPHS meeting on the first or third Saturday or call 764-2401 or 262-0218.

Misericordia's  
GREENHOUSE INN

Serving a delicious lunch menu of soup,  
salad bar, sandwiches and  
a daily hot special

Mon.-Fri.  
11:00 am-2:00 pm

6300 N. Ridge  
Chicago

973-6300

The Inn offers job opportunities for young people with mental  
disabilities

Pinewood Inn

2310 W. Touhy

973-4443

Rogers Park's

Family Pub for Over 50 Years

Daily Specials — Mon.-Sat.

Free Estimates

Reasonable Rates

Insured

RAVEN DECORATING, INC.

1933 W. Chase  
973-3590

Water Damage Repaired

Have worked on RPHS Tour Houses  
and I can work on yours.

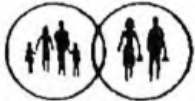
Dan Raven — RPHS Member

Ridge-Howard Pharmacy, Inc.

7559 N. Ridge

743-5255

"Just an Old-Fashioned Drug Store"



Rogers Park Family Practice

6974 N. Clark

743-6300

Quality Health Care

Diane Fabricius  
and  
Jeff Grabenstein

William Homer  
2125 W. Howard  
338-6500

State Farm  
Insurance Companies

Like a good neighbor,

State Farm is there.

**VIP**

INTERNATIONAL  
TRAVEL INC.

7037 N. Clark Street

Phone: 508-0600

Fax: 508-5223

Quality Service & True Value  
For Business and Pleasure

Cruise  
Tours

Amtrak Train  
Airlines



THE OUTREACH PROGRAM  
of  
WISDOM BRIDGE THEATRE

\*BUILDING BRIDGES  
IN ROGERS PARK\*

THE CABARET SERIES  
SUMMER TEEN WORKSHOP  
IN-SCHOOL RESIDENCIES  
STUDENT/SENIOR MATINEES  
AFTER-SCHOOL THEATRE WORKSHOPS

For more information about the WBT Outreach Program,  
call 743-0486

Would you like to place an ad here, call John Arcand at 764-2401.

\*\*\*\* Thanks to our Sponsors for their Support. \*\*\*\*

## RPHS Annual Holiday Party

Did we hear laughter? Oh, yeah! And singing? Yes, indeed! (under Susan Lukatch's able direction).

Were there dancing girls? Well -- maybe one or two .... (no names, please!)

And the goodies, goodies galore -- then, the table cleared and -- encore, encore! a magic act -- Hot food to warm the body and the heart!

Everywhere -- in every room -- such strange questioning -- "Am I living?" "Am I a man?" "Am I famous in sports -- in the theatre -- in literature?"

What's the matter with these people -- don't they even know who they?

Oh .... I see -- it's the Name Game -- label on the back and all that kinda tricky stuff (look out for that Loretta .... she sneaks up behind you!).

And all this so Michael Calhoun could guess he was -- Ginger Rogers! First prize to Michael.

And wasn't Miranda Lukatch the smart little lady? Would you ever believe she was -- WHO? GEORGE BURNS? WOW! You sure coulda fooled me! A well deserved second prize to her.

Loretta Bamman

Many door prizes were given to selected party goers as they names were drawn.

Thanks to our sponsors for their generous contributions used for the building fund raffle and for some of the door prizes. The party goers listened intently as names were drawn.

- |                            |                              |
|----------------------------|------------------------------|
| 1. Holiday Inn Weekend     | Judy Joyce                   |
| 2. A Massage For You?      | D. Bezanis                   |
| 3. The Angus Restaurant    | Florence L.                  |
| 4. Ross' Restaurant        | Julie Arcand                 |
| 5. No Exit Cafe            | Kathy Hravbosky              |
| 6. RPFS House Tour Tickets | Emily Klose                  |
| 7. Sundance Cafe           | L. Bezanis                   |
| 8. Round Records           | Denise Orlando<br>Judy Joyce |

## COMMUNITY CUISINE

### Rum Cake

- 1 package yellow cake mix
- 3 ¼ oz. instant vanilla pudding
- ½ cup vegetable oil
- ½ cup rum
- ½ cup water or orange juice
- 4 eggs - add one at a time and beat for two minutes

Grease and flour a bundt pan and add 1 cup chopped pecans or walnuts to bottom. Turn batter into pan. Bake 50-60 minutes at 325.

### Glaze:

- 1 stick of butter
- ¼ cup water
- 1 cup granulated sugar
- ½ cup rum

Melt butter and stir in water and sugar. Boil for 5 minutes, stirring constantly. Remove from heat and stir in rum. Let cake sit for 20 minutes after removing from oven. Turn out of pan and cover with glaze.

Cake keeps in refrigerator for 3-4 weeks. For mellow cake, make 1 or 2 days before serving. Serve at room temperature for full flavor.

Eleanor Mars

Editor' Note: This is the delicious cake that we have enjoyed on many occasions.



## NEWSLETTER

If you are receiving this newsletter in the mail for the first time, it is probably because you signed up to be on the mailing list at one of our events during the past few months. To insure your continuing receipt of the Newsletter and other Society announcements, please forward your membership application soon. The Society needs you.



## RPFS MEMBERSHIP DUES

Life Member	---	\$500.00
Donor	Annual	100.00
Sustaining	Annual	50.00
Sponsor	Annual	30.00
Family	Annual	15.00

FTD Service  
World Wide

Angel Guardian Orphanage Florist  
"Think of Us When  
You Think of Others"

John Letman, Owner

2500 W. Pratt

973-7400

QUALITY LIVING SPACES

Steps from the Lake  
in  
Beautiful Rogers Park



CAPSTONE PARTNERS

761-3700

Personal. Business. Trust.  
Your Success Is Important To Us!



6445 N. Western

465-2500

Equal Opportunity Lender Member FDIC

Over 45 Years Serving the Community

Graphic House  
8220 Skokie Boulevard Skokie

708-982-0022



Full Printing Service -  
From Conception Through Delivery  
of Quality Materials

We are coming home to Rogers Park  
in the Spring of 1991

Greene & Company

1737 W. Howard

465-7711

Certified Public Accountants

Taxes

Marvin Greene - RPHS Member

Kathleen A. Hrabovsky, A.I.A.  
262-0647

KAH

Kathleen Hrabovsky, Architects  
6919 N. Wayne Ave., First Floor  
Chicago, Illinois 60626

Architecture/Interiors/Planning

Your Feet Need A Doctor Of Their Own

My years of training have focused exclusively on  
preventing, diagnosing, and treating foot problems, including:

- Bunions
- Hammertoes
- Athletes' Foot
- Corns & Callouses
- Heel & Arch Pain
- Warts
- Ingrown nails
- Sports Medicine
- Diabetic Problem
- Injuries



Dr. Marc A. Katz

2700 W. Touhy

338-3500

Long-Kogen Realtors

Steve Tres — Associate Broker

7070 N. Western

764-6500

Serving the Rogers Park/West Ridge

Communities for over 59 Years

## RPHS Annual Holiday Party

Did we hear laughter? Oh, yeah! And singing? Yes, indeed! (under Susan Lukatch's able direction).

Were there dancing girls? Well -- maybe one or two .... (no names, please!)

And the goodies, goodies galore -- then, the table cleared and -- encore, encore! a magic act -- Hot food to warm the body and the heart!

Everywhere -- in every room -- such strange questioning -- "Am I living?" "Am I a man?" "Am I famous in sports -- in the theatre -- in literature?"

What's the matter with these people -- don't they even know who they?

Oh .... I see -- it's the Name Game -- label on the back and all that kinda tricky stuff (look out for that Loretta .... she sneaks up behind you!).

And all this so Michael Calhoun could guess he was -- Ginger Rogers! First prize to Michael.

And wasn't Miranda Lukatch the smart little lady? Would you ever believe she was -- WHO? GEORGE BURNS? WOW! You sure coulda fooled me! A well deserved second prize to her.

Loretta Bamman

Many door prizes were given to selected party goers as they names were drawn.

Thanks to our sponsors for their generous contributions used for the building fund raffle and for some of the door prizes. The party goers listened intently as names were drawn.

- |                            |                              |
|----------------------------|------------------------------|
| 1. Holiday Inn Weekend     | Judy Joyce                   |
| 2. A Massage For You?      | D. Bezanis                   |
| 3. The Angus Restaurant    | Florence L.                  |
| 4. Ross' Restaurant        | Julie Arcand                 |
| 5. No Exit Cafe            | Kathy Hravbosky              |
| 6. RPHS House Tour Tickets | Emily Klose                  |
| 7. Sundance Cafe           | L. Bezanis                   |
| 8. Round Records           | Denise Orlando<br>Judy Joyce |

## COMMUNITY CUISINE

### Rum Cake

- 1 package yellow cake mix
- 3/4 oz. instant vanilla pudding
- 1/2 cup vegetable oil
- 1/2 cup rum
- 1/2 cup water or orange juice
- 4 eggs - add one at a time and beat for two minutes

Grease and flour a bundt pan and add 1 cup chopped pecans or walnuts to bottom. Turn batter into pan. Bake 50-60 minutes at 325.

### Glaze:

- 1 stick of butter
- 1/4 cup water
- 1 cup granulated sugar
- 1/2 cup rum

Melt butter and stir in water and sugar. Boil for 5 minutes, stirring constantly. Remove from heat and stir in rum. Let cake sit for 20 minutes after removing from oven. Turn out of pan and cover with glaze.

Cake keeps in refrigerator for 3-4 weeks. For mellow cake, make 1 or 2 days before serving. Serve at room temperature for full flavor.

Eleanor Mars

Editor' Note: This is the delicious cake that we have enjoyed on many occasions.



## NEWSLETTER

If you are receiving this newsletter in the mail for the first time, it is probably because you signed up to be on the mailing list at one of our events during the past few months. To insure your continuing receipt of the Newsletter and other Society announcements, please forward your membership application soon. The Society needs you.



## RPHS MEMBERSHIP DUES

Life Member	----	\$500.00
Donor	Annual	100.00
Sustaining	Annual	50.00
Sponsor	Annual	30.00
Family	Annual	15.00

Basketball at the Academy, with many of its stars continuing at the University, was generally among the leaders in the Catholic High School circuit. In the meantime, the University began to sponsor the National Catholic High School tournament each mid-March, which showcased the nation's stars, some of whom opted to play for the University. It was an exciting and colorful event and played to large crowds day and night all week, until the onset of World War II crimped the railway transportation facilities to bring about its abandonment.

Emphasis on basketball continued unabated after the War as the population expanded. Large gymnasiums were a must for all new school buildings. Many cramped old gyms were rebuilt and expanded and girls now took up the game seriously.

Let's get on to football. Again my first brush with football was as an observer at the Loyola University and Academy practices and scrimmages. The Academy's first opponent each year was Senn, and a bitter rivalry it was for many years. Some of the Academy standouts through the years were John Ladner, a clever halfback who starred in the Jim Mooney era. Mooney, to be followed by his brothers, was the first high school placekicker of renown as the dropkick was being phased out as a scoring device. Lars Lungoot, a University quarterback, was still deadly with the dropkick from anywhere, however.

Many of the Academy stars were: the Metzger brothers, the Gholson brothers, Fred Sextro, John Boex, Jack Sullivan and others too numerous to identify. The present pastor of St. Ignatius Church, David Bowman, in 1937, was an All-state and All-Catholic first stringer.

Loyola University greats, prior to its dropping of football in 1930, included Bud Gorman, Whitey Cronin, Marvin Adams, Joe Bush and Les Malloy, to name a few. It should be noted, at this time, that the new St. George High School in Evanston opened and soon became outstanding in sports, especially after Max Burnell started coaching. Many of the athletes lived in the Rogers Park/West Ridge area.

Let's talk now about sports in which all could participate. Take ice skating for example. The principal ponds were at the Rogers Park Tennis Club on Morse Avenue, Loyola University tennis courts, Touhy Beach, Field Branch Playground, on the present site of Sullivan High School, plus a lot of vacant lots.

In the same category and on some of the same sites, tennis reigned in the warmer weather. Bowling, of course, ever gaining popularity, must be considered, too. The principal alleys would include Muno's on Western north of Touhy (later Markay Bowl), Howard Bowl still on Howard east of Clark and Young's Alleys on Loyola at the 'L', to name a few.

While on the topic of nonteam sports, one of Rogers Park proudest boasts was the location of the Edgewater Golf Club course within its confines. It was first located for many years between Sheridan and Southport (now Glenwood) and Devon and Loyola as a nine-hole course. It shut down in 1913 and awaited the completion of its new locale. The country club was situated just west of Ridge and extended to Western between Pratt on the north and close to Arthur on the south. In the spring of 1917 the new course was completed and opened to its members, and was for many years as fine an 18-hole facility as any in the country.

In the 1930s, there were several miniature courses and driving ranges throughout the area where not so serious golfers

could spend some idle hours. I know I have forgotten some individuals, unintentionally, or slighted a few others, but such a viable subject could lead to hours of discussion, and a plethora of verbiage which I had to limit.

Norm Coughlin



### The Lake

*Ripples flowing .... people glowing  
faces turning toward the water.*

*A handsome gold and brown Monarch  
rests for a moment in a tree's shade*

*Boats, with sails unfurled  
await a friendly breeze.*

*Calmness caresses everyone  
all along the shore*

*Erasing the hurts of the week just past  
and bringing peace to harried souls.*

*Now the sun is waning, and, pleasantly weary,  
the healing now completed,*

*we begin our journey home.*

Loretta Bamman



### New Rogers Park Library

HOW CAN YOU HELP?

Join the:

Friends of the Rogers Park Library  
6907 N. Clark  
Chicago, IL 60626

Stop in at the library and sign a Capital Project Request form if you have not already done so.



### RPHS Membership Cards

Our Society membership cards are being redesigned and enlarged to wallet size. New cards will be issued to all 1991 paid members and included with the Spring Newsletter issue.

## CASH RECEIPTS AND DISBURSEMENTS

Year ended December 31, 1990

Cash Receipts	Amount	
Building Fund	\$ 6,066.00	
House Tour	3,644.00	
Socials	3,157.00	
Membership	2,115.00	
Interest	1,316.00	
Newsletter	150.00	\$16,448.00
Cash Disbursements		
Socials	2,187.00	
Newsletter	1,460.00	
House Tour	1,244.00	
Office Expenses	1,055.00	
Building Fund	646.00	
Supplies	256.00	
Miscellaneous	742.00	\$ 7,590.00
Cash Balance - January 1, 1990		\$16,912.00
Cash Balance - December 31, 1990		25,770.00

● ● ●

### Photos Wanted

Ashkenaz - 1300 Morse  
Davy Jones Locker - Devon & Sheridan  
Holloway House Cafeteria - Howard/Western  
Kelly & Martin Drug Store - Touhy & Western  
Kerr - south side of Morse west of the 'L'  
Paul's Umbrella - Touhy & California  
Puff Fluff Donut - Western north of Pratt  
Toddle House - east side Sheridan N. Greenleaf

● ● ●

### Local Anniversaries:

My Place For ? - 20th  
Rogers Park Baptist Church - 100th  
Rogers Park Woman's Club - 100th

### Chicago Anniversaries:

Chicago Bulls - 25th  
Lou Malnatti's - 20th

### National Anniversaries:

Harlem Globetrotters - 65th  
Masterpiece Theatre - 20th  
San Diego Zoo - 75th  
White Castle - 70th

## BUILDING FUND UPDATE

Rogers Park History Center

The goal of the RPHS Building Fund drive is to establish a Rogers Park History Center to house our large collection of photos and historic artifacts and to be a center for our activities.

We have raised approximately \$ 20,000 toward our goal of \$200,000. Won't you help with your share?

### Building Fund Donors:

#### Farmers/Gardeners:

Loren P. Kringle

#### Builders:

Connie Koopman

#### Other:

Bob & Lorene Hopkins  
McGuire Family

Elsie Sampson  
Jeanette Statland

● ● ●

### Membership

Any viable organization thrives on a continuing and growing membership. Your annual dues assist greatly in copying photos, creating this newsletter and supporting our special programs. Please consider renewing your membership or joining the Society, if you are not already a member.

● ● ●

### Pet Owners

Every year thousands of dogs and cats are killed because there are not enough homes. You can help to stop this killing of innocent animals by neutering your pet. For information on the spay/neuter subsidy program, which is available to everyone, call the Anti-Cruelty Society at 312-644-8338.

Coupons worth \$25-50 can be used at the vet of your choice.

# Rogers Park Historical Society

## FIRST ANNUAL PHOTO DAY (for members and guests only)

Saturday, May 4, 1991  
from 11:00 am - 3:00 pm

at the home of Joe and Karen Vanourek  
2458 W. Morse  
Chicago, IL 60645

\*\* Reservations must be received by April 29th. \*\*  
(see article on page 1.)

For additional information, call one of the following people:

Mary Jo Doyle  
Marty Schmidt

312-764-2401  
312-262-2913

Larry Calhoun  
Jeanette Statland

312-274-0798  
708-869-9317

Thanks for helping to preserve the rich  
heritage of our wonderful neighborhood

Society Membership includes quarterly newsletter, discounts and mini tours.

---

### APPLICATION FOR MEMBERSHIP AND/OR PHOTO DAY

1991 annual dues are \$ 10.00 per person and the membership period is from  
January 1st thru December 31st. (See additional categories on page 8.)

Membership: New  Renewal  Photo Day  No. of Persons \_\_\_\_ Building Fund

Photo Day - \$ 4.00 for members -- \$ 5.00 for nonmembers  
(includes goodies, beverages and door prizes)

Enclosed is a check for \$ \_\_\_\_\_ made payable to Rogers Park Historical Society

---

Name

Telephone

---

Address

City

State

Zip

Mail to: Rogers Park Historical Society  
2555 W. Farwell  
Chicago, IL 60645

I would like to help the Society when I am available.

91-03

11

## WELCOME NEW MEMBERS

### Individual:

Agnes I. Brennan  
James Chiakulas  
John Chiakulas  
Jim Dickes  
Jim Differding  
Herb Fagen  
Marion M. Zender

### Family:

Becky & Robby Adams  
& Brian Duffin  
Mary & Sam Borke  
Robert & June Lowum  
Hank & Tina Rubin

### Sustaining:

Andrew T. Mondl

## NEWSLETTER NOTICES

This newsletter is published by the Rogers Park Historical Society, a not-for-profit organization founded in 1975 to preserve the roots of our community. Correspondence may be directed to the editor: Norm Coughlin, 6555 N. Bosworth Chicago, IL 60626. Phone 262-3190. Managing Editor: Mary Jo Doyle

This newsletter is printed by Denis and Kathie Paluch, Graphic House Inc., Skokie, IL, Charter Members of the Rogers Park Historical Society and long-time residents of Rogers Park.

Contributors: John Arcand, Loretta Bamman, Larry Calhoun, Norm Coughlin, Mary Jo Doyle and Susan Lukatch.

WE WELCOME GUEST COLUMNISTS AT ANY TIME.

### Renewals continued:

### Sponsor:

Johnathan, Deborah, Rikki & Jorie Robinson

### Sustaining:

Suc Sosin

## THANKS FOR RENEWING

### Individual:

Mildred Amschl  
John Arcand  
Loretta Bamman  
Zelda Barnett  
Eleanor Bell  
Elizabeth Borden  
Larry Calhoun  
Fr. James Chambers  
Madalene Clesen  
Kathleen Connolly  
Rita Conway  
Darwin Corrin  
Millicent & Robert  
Cooper  
Norm Coughlin  
Nick Davlantes  
Mildred Dina  
Mary Jo Doyle  
Tony Eberhart  
Mary Friedman  
Helen Fullam  
Mitzi Golden  
Virginia Hock  
Irma N. Hogan  
Bettie Jasper  
Marge Johnson  
Connie Koopmann  
Loren Kringle  
Kathleen La Plume  
Robert La Plume  
Dennis LoBue  
Emily Lopez  
Susan Lukatch  
Kathleen Machek  
Eleanor Mars  
David Marshall  
Tom McNulty  
Curtis Mitchell  
David Miller  
Hank Miller  
Patricia Nowak  
Denise Orlando  
Mel L. Rohrer  
Mervyn Ruskow  
Elsie Sampson  
Marty Schmidt  
Ruth Shatzel  
Jeanette Statland  
Bill Steinfeld  
Arlene Weiss  
Jon Willarson  
Barbara Young  
John J. Zender

### Family:

Bob & Michael Clarke  
Thomas & Kathleen  
Conrardy  
Jack & Doris Coussens  
Ken & Eleanor Davis  
Bonnie & Dick Driscoll  
Paul & Jean Einsweiler  
David Eisen &  
Sheila Kerstein-Eisen  
Bob & Jane Goldsmith  
Thomas Heineman &  
Peggy Hall-Heineman  
James Kroker &  
Christine Larsen  
Michael O'Connor &  
Sara Mauk  
Pat & John O'Neal  
Jamie & David Paradise  
James & Delores Patton  
Dan & Peggy Raven  
Mr./Mrs. Arthur Runquist  
Diane Taylor & Paul Friedman  
John Appel & Barbara Wolkowitz  
Duane & Ethel Woodruff  
Robert & Lorene Hopkins



Rogers Park Historical Society  
2555 W. Farwell  
Chicago, IL 60645

### MEETINGS

1st and 3rd Saturdays  
11:15 am - 1:00 pm

Rogers Park Library  
6911 North Clark  
Chicago, IL 60626  
764-0156